



# Hardy Device Library

08.12.2024



expanding **human possibility**<sup>®</sup>



PUBLIC

# HARDY

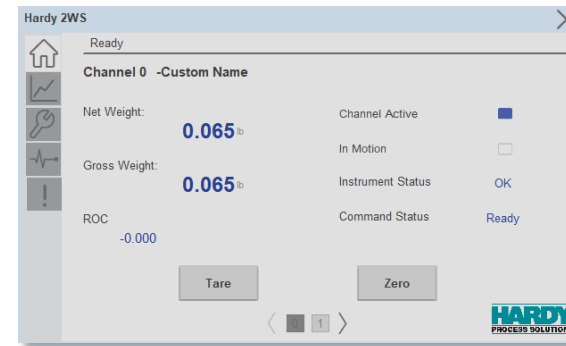
## Device Library

### Integrated weighing applications:

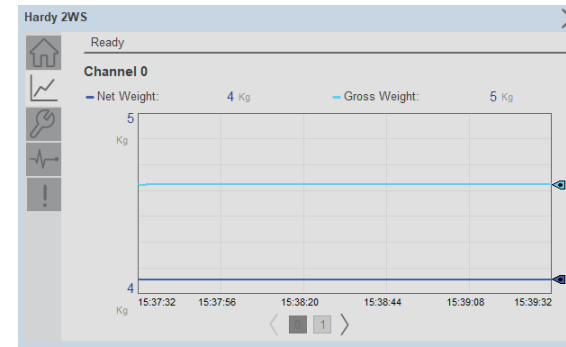
- HI1756-WS ControlLogix® Weight Scale Module
- HMI faceplates for Rockwell Automation:
  - FactoryTalk® View ME/SE
  - FactoryTalk® Optix
  - Studio 5000 View Designer®

### Diagnostics and Configuration

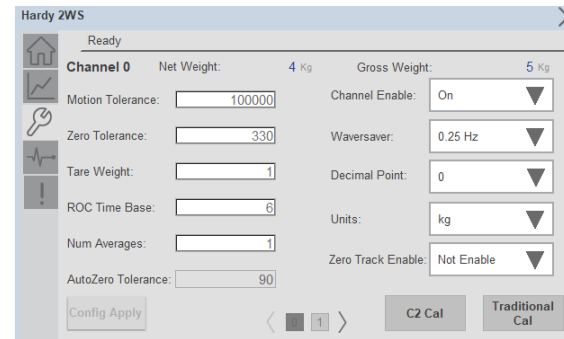
- Read net weight and gross weight
- Monitor motion, rate-of-change, and diagnostics
- Perform tare and zero commands
- Perform traditional and C2 calibration types
- Review device fault and warning history



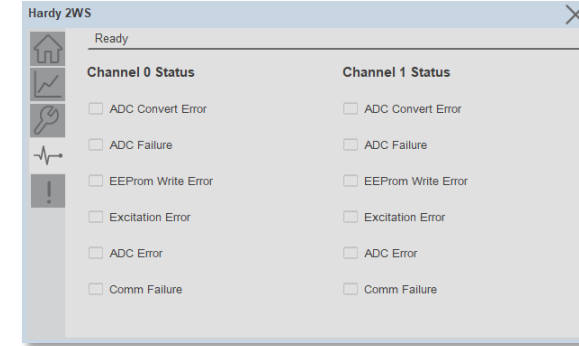
Monitor weight status



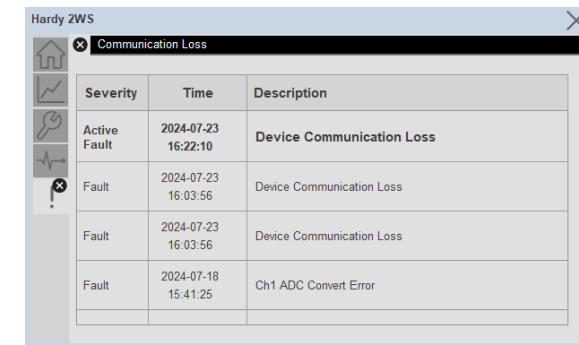
Trend weight



Scale Configuration and Adjustment



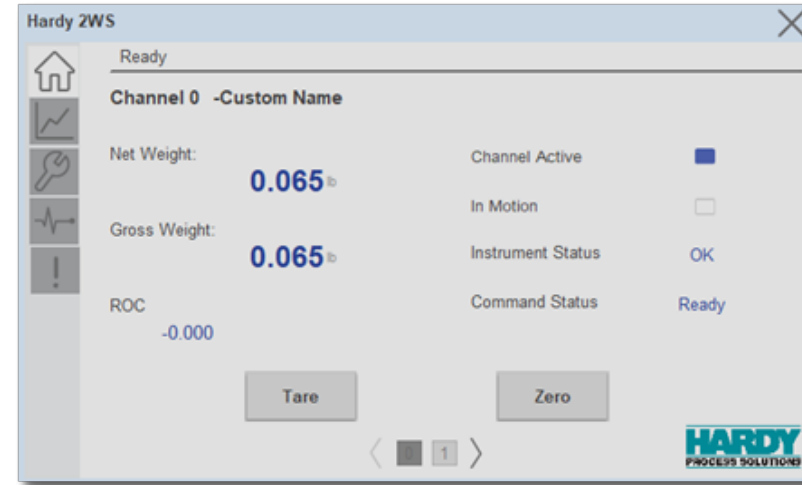
Device Diagnostics



Detailed fault history

# Hardy Device Library v1.00

Tested, documented and life cycle managed object library providing preconfigured status and diagnostic faceplates for Hardy Process Solutions weigh scale modules. Use with Studio 5000® Application Code Manager for easy implementation.



**HARDY**  
PROCESS SOLUTIONS



## Supported Device

- HI1756-WS ControlLogix® Weight Scale Module

## Includes:

- Studio 5000 Logix Designer® Add-On Instruction
- Studio 5000® Application Code Manger Object
- FactoryTalk® View ME/SE, FactoryTalk® Optix and Studio 5000 View Designer® Faceplates
- Reference Manual

## Diagnostics:

- Read net weight and gross weight
- Monitor motion, rate-of-change, and diagnostics
- Perform tare and zero commands
- Perform traditional and C2 calibration types
- Review device fault and warning history

## Supported HMI Platforms

- FactoryTalk® View SE
- FactoryTalk® View ME (PanelView Plus)
- FactoryTalk® Optix
- Studio 5000 View Designer® (Panelview 5000)

# Hardy - HI1756-WS ControlLogix® Weight Scale Module



Ease of device configuration, commissioning, and troubleshooting diagnostics

## Home

Monitor realtime net weight and gross weight readings. Perform tare and zero commands.

## Trend

Trend realtime gross and net weight values.

## Configure

Configure scale channels including motion/zero tolerance, waversaver® and more.  
Perform calibrations.

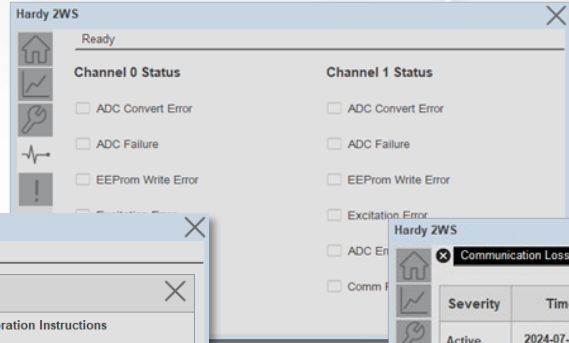
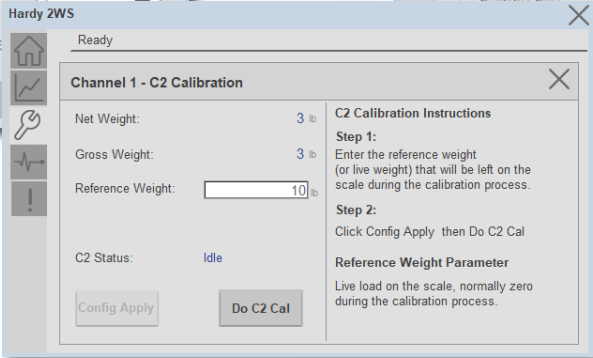
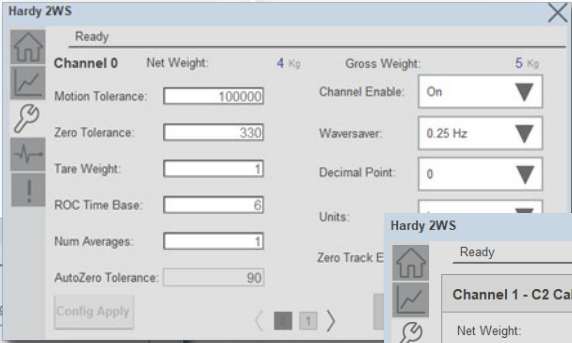
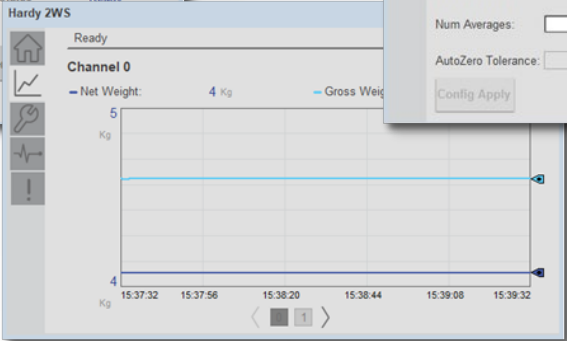
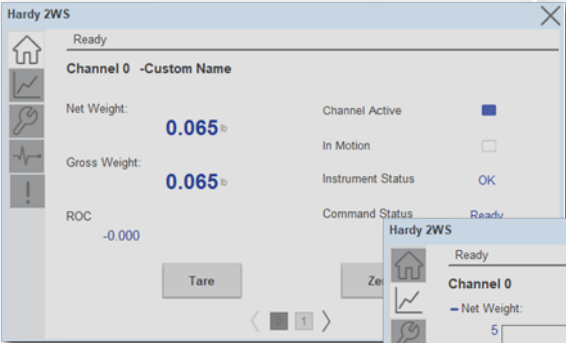
## Diagnostics

Monitor device errors.

## Fault & Details

Running history of the last (4) faults and alarms with descriptions

Click for detailed description and possible action steps to remedy condition.





---

expanding **human possibility**<sup>®</sup>

---

